



reveal + connect + discover + understand + evolve

StatutesPlus™ PastStat Locator™ Covering New Jersey



Instant access to historical statutory versions in key jurisdictions

Now you have unlimited access to an online library that delivers the exact version of a statute as it existed at a specific point in time.

Imagine the time you'll save!

Statutes are continuously amended, revised, overruled, and superseded. Now you can instantly find the version of the code that was in effect when your client's offense, injury, or other legal matter took place.

Introducing PastStat Locator, available exclusively on Westlaw®

Coverage in this library includes:

- New Jersey state statutes, with versioning coverage back to January 1, 2000

Track renumbered statutes

PastStat Locator shows you how your statute has changed – and what statute section took its place.

PastStat Locator works forward in time as well

PastStat Locator will tell you when a statute or amendment is due to take effect. Similarly, it will tell you the date it is due to lapse.

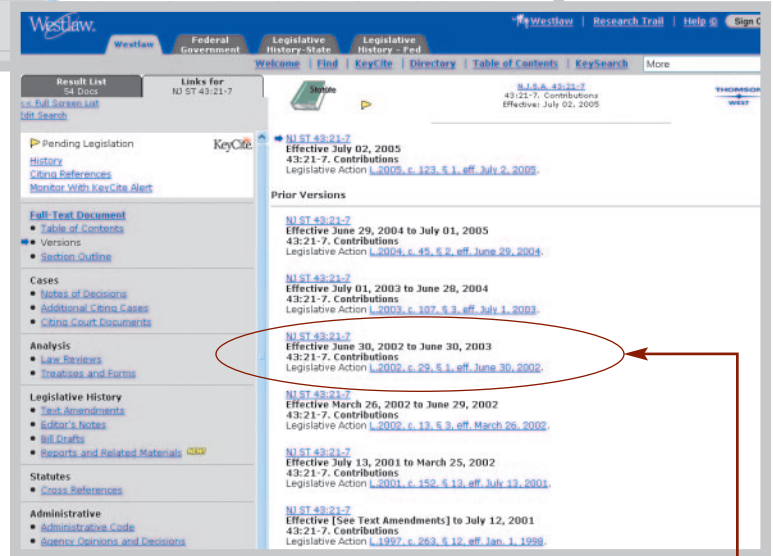
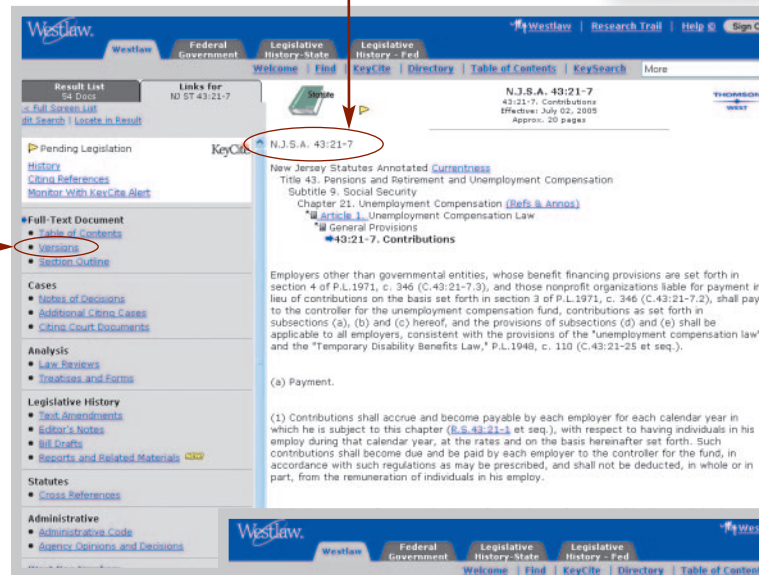
Three easy access points to find the statute version you need:

- Start with your statute section and click on "Versions" from the Links tab (shown here)
- Start at the Table of Contents and type in a date (shown on back)
- Search using an "effective" date (shown on back)

As easy as A-B-C

Look how quickly you can find the exact text of a statute as it existed on a particular date.

A. Once you find the code section that applies to your legal issue ...



B. ... click here in the left pane on "Versions"

C. View a list of past versions. One click and you link to the full text of the statute as it existed on a particular date.

StatutesPlus PastStat Locator For New Jersey

Besides the method shown on the front side, here are two other ways of finding the exact version of a statute. In this library, you have unlimited use of PastStat Locator for New Jersey state statutes.

Coverage in this library includes:

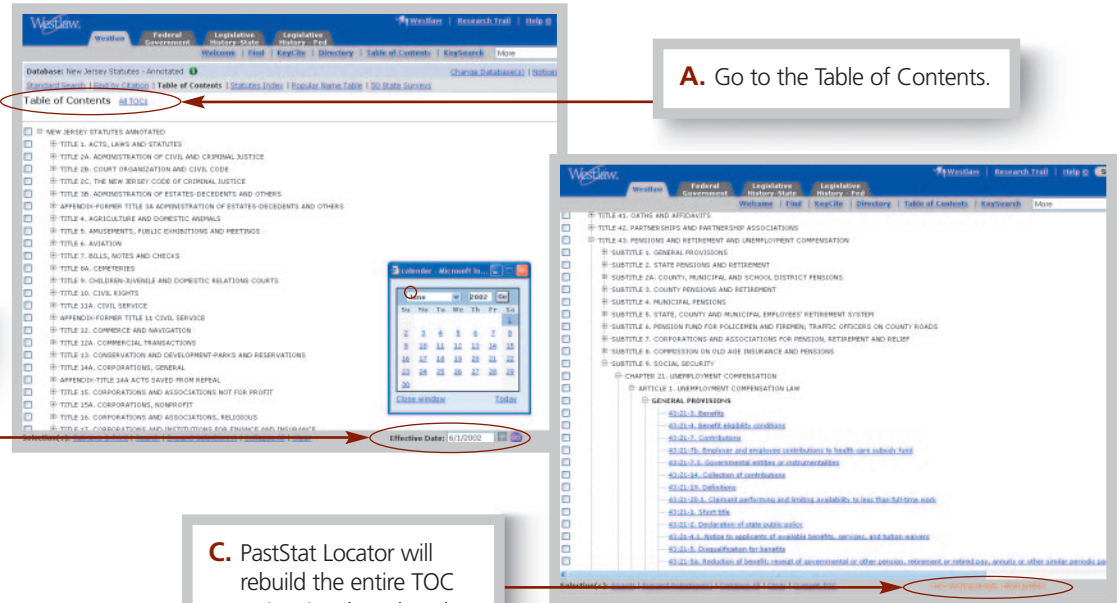
- New Jersey – Contains *New Jersey Statutes Annotated*, with versioning coverage back to January 1, 2000

1. Search for past statutes via the Table of Contents

PastStat Locator will also rebuild the Table of Contents and show you how it existed on a particular date.

B. Put in your effective date.

C. PastStat Locator will rebuild the entire TOC as it existed on that day.

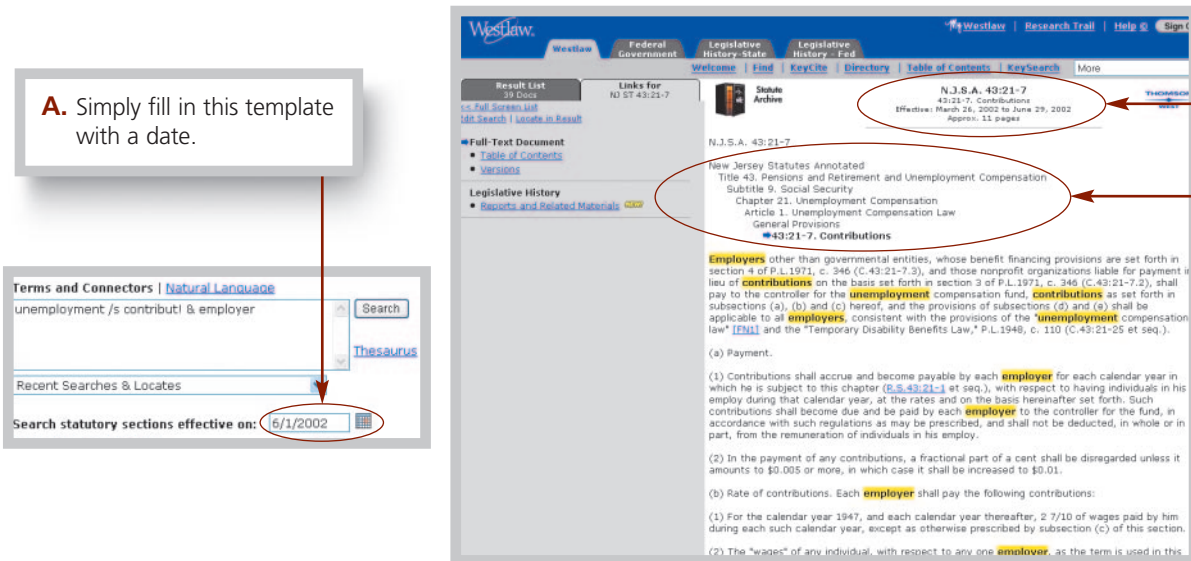


2. Or search by "effective" date

Perhaps easiest of all, you can search using the same methods you would for any Westlaw database – either Natural Language or Terms and Connectors.

A. Simply fill in this template with a date.

B. And see the statute as it existed on that date.



Visit west.thomson.com
or call 1-800-762-5272