

# LIVENOTE LEFMAKER

## **Installation Guide**

For LiveNote LEFMaker version 1.0

1-800 LIVENOTE | [www.LiveNote.com](http://www.LiveNote.com)



Published by:  
LiveNote Technologies Ltd  
221 Main Street, Suite 1250  
San Francisco, CA 94105

---

**Copyright © 2005 LiveNote Technologies Ltd. All rights reserved.**

Information in this document is subject to change without notice. No part of this book may be reproduced or transmitted in any form or by any means without the written consent of the publisher.

LiveNote is a trademark of LiveNote Technologies

Windows is a trademark of Microsoft Corporation.

Other product and company names mentioned in this document may be the trademarks or service marks of their respective owners.

Additional copies of this document are available from LiveNote Technologies Ltd directly by emailing [publications@LiveNote.com](mailto:publications@LiveNote.com).

# Contents

<b>1</b>	<b>Welcome to the LiveNote LEFMaker installation guide.....</b>	<b>3</b>
	About this guide .....	3
	About the LiveNote LEFMaker .....	3
<b>2</b>	<b>System requirements .....</b>	<b>5</b>
	Minimum requirements .....	5
	Recommended requirements .....	5
	Supported operating systems .....	5
	Installation.....	5
<b>3</b>	<b>Installing LiveNote LEFMaker.....</b>	<b>7</b>
<b>4</b>	<b>Activating LiveNote LEFMaker manually .....</b>	<b>11</b>
	Overview .....	11
	Activating LEFMaker via the Internet.....	11
<b>5</b>	<b>Contacting LiveNote.....</b>	<b>13</b>



# 1 Welcome to the LiveNote LEFMaker installation guide

## About this guide

This installation guide provides you with the information you need to install and activate the LiveNote LEFMaker. It includes a section on system requirements and a section providing LiveNote contact details, should you require further assistance.

## About the LiveNote LEFMaker

LEFMaker creates LEF (LiveNote Evidence Format) files. LEF files contain a transcript and may contain scanned, linked exhibit files, and, if the transcript is included in PTF format, a video synchronization file.

LEF files can be imported and viewed in LiveNote.



# 2 System requirements

## Minimum requirements

- Pentium 300-MHz processor.
- 64 megabytes (MB) of RAM.
- 50 MB available hard drive space.
- Internet Explorer 5.5.

## Recommended requirements

- Pentium 1-Ghz processor or better.
- 256 megabytes (MB) of RAM or better.
- 500 MB available hard drive space.
- Internet Explorer 5.5.

## Supported operating systems

- Windows 98SE.
- Windows ME.
- Windows NT.
- Windows 2000.
- Windows XP.

---

Note: LiveNote no longer supports the Windows 95 operating system.

---

## Installation

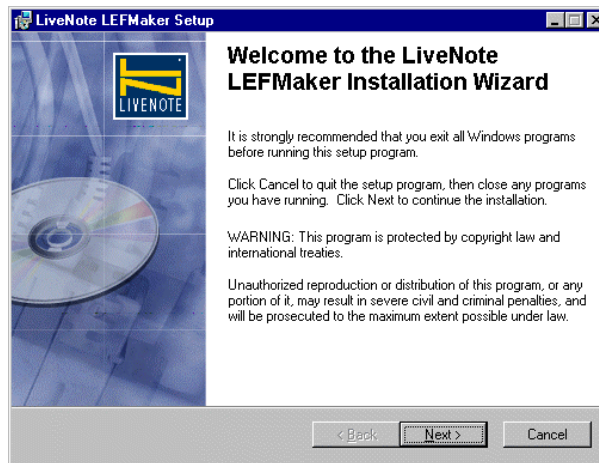
To enable all users to access LEFMaker, you must have administrator privileges on the computers on which you are installing the product.



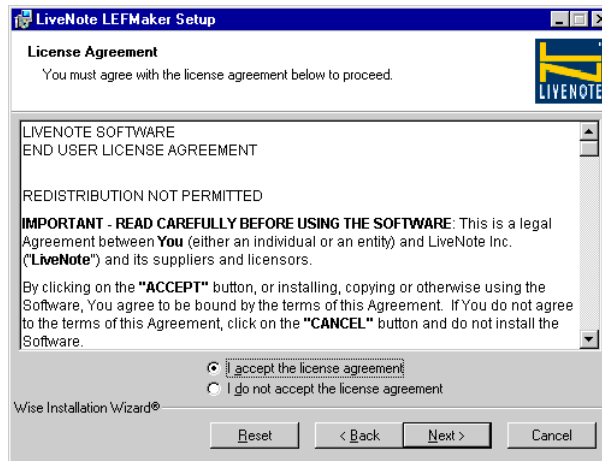
# 3 Installing LiveNote LEFMaker

## To install LEFMaker:

1. Place the CD containing LiveNote LEFMaker in your CD ROM drive.
2. From the **Start** menu, choose **Run**.
3. Browse to the LEFMaker folder on the CD and double-click on the .msi file. The **Welcome to the LiveNote LEFMaker Installation Wizard** dialog box is displayed.

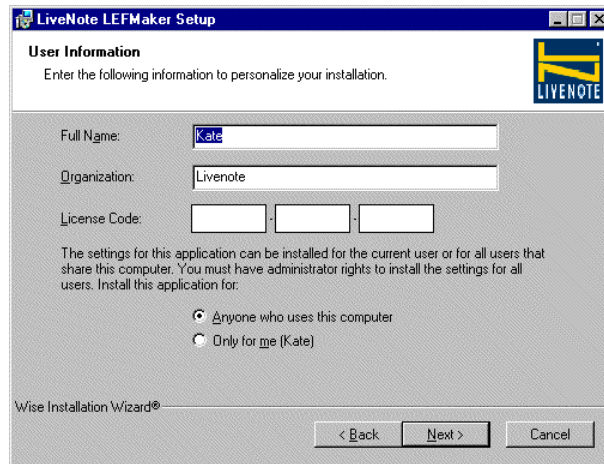


4. Click **Next**. The **License Agreement** dialog box is displayed. This dialog box details the LiveNote software end user license agreement.



5. Read the agreement, select **I accept the license agreement**, then click **Next**. The **Readme Information** dialog box is displayed. This dialog box provides information about the version of LEFMaker that you are installing.

6. Read the through the information then click **Next**. The **User Information** dialog box is displayed.



7. Complete the **Full Name**, **Organization** and **License Code** fields.
8. Select either:
  - **Anyone who uses this computer** to allow all users access to the LEFMaker.

---

Note: You must have administrator rights to enable all users to use this application.

---

- **Only for me** to enable access to LEFMaker to the current user only.
9. Click **Next**. The **Destination Folder** dialog box is displayed.
  10. To:
    - Accept the default installation location, click **Next**. The **Launch LEFMaker after installation** dialog box is displayed. Continue with Step 11.
    - Change the installation location:
      - a. Click **Browse**. The **LiveNote LEFMaker Setup** dialog box is displayed.
      - b. Select the drive and folder where you want to install the LEFMaker, or type the full path to the location. If the specified folder does not exist, the Installer will create it.
      - c. Click **OK**. The LiveNote LEFMaker Setup dialog box is closed.
      - d. Click **Next**.

The **Launch LEFMaker after installation** dialog box is displayed. On this dialog box, you can choose to launch and activate LiveNote LEFMaker at the end of the installation process. Automatic activation requires Internet access.

11. On the **Launch LEFMaker after installation** dialog box, select:
  - **Yes, launch LiveNote LEFMaker**, if you want to activate the LEFMaker after installation.
  - **No, I will launch LiveNote LEFMaker later**, if you want to launch or activate LEFMaker at a later point in time.
12. Click **Next**. The **Ready to Install the Application** dialog box is displayed.

13. Click **Next** to start installing LiveNote LEFMaker.

When the LiveNote Setup Wizard has completed the installation, the **LiveNote LEFMaker has been successfully installed** dialog box is displayed.

14. Click **Finish** to close the LiveNote LEFMaker Setup Wizard.

If you chose to launch and activate LiveNote LEFMaker after installation, the LEFMaker is launched and attempts to automatically activate itself. If, for some reason this is not possible, you will need to activate LiveNote LEFMaker manually. For information about activating LiveNote LEFMaker manually, continue with “Activating LiveNote LEFMaker” on page 11.



# 4 Activating LiveNote LEFMaker manually

## Overview

LEFMaker attempts to automatically activate the first time you run it after installation. If this is unsuccessful, the following message is displayed:

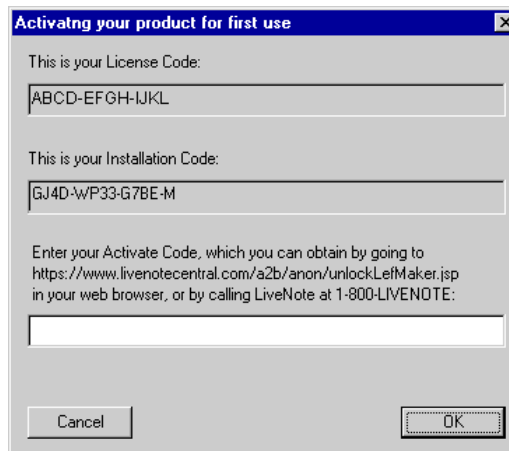


You will need to manually activate LEFMaker. You do this via the Internet.

## Activating LEFMaker via the Internet

To activate LEFMaker via the Internet:

1. On the **Failed to obtain Activate Code automatically** dialog box, click **OK**. The **Activating your product for first use** dialog box is displayed.

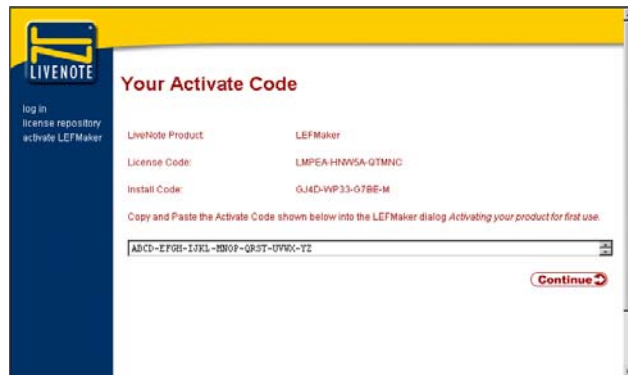


## Activating LiveNote LEFMaker manually

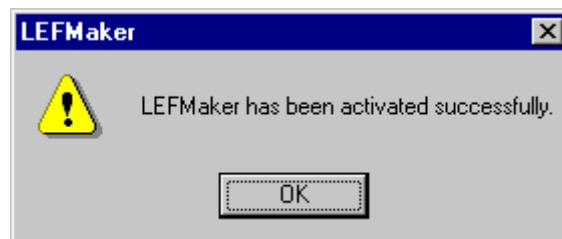
- LEFMaker will attempt to open the **Activate your LEFMaker** web page in your web browser. If it fails to do this, open your web browser and type in the address specified on the **Activating your product for first use** dialog box.



- The fields on the **Activate your LEFMaker** web page should be already be filled in. However, if they are not, type:
  - The **License Code**, shown on the **Activating your product for first use** dialog box, into the **Enter the License Code** field.
  - The **Installation Code**, shown on the **Activating your product for first use** dialog box, into the **Enter the Installation Code** field.
- Click **Activate Code**. The **Your Activate Code** web page is displayed.



- Copy the **Activate Code**, shown on the **Your Activate Code** web page, and paste it into the field at the bottom of the **Activating your product for first use** dialog box.
- Click **OK**. The following message is displayed.



- Click **OK** to close the dialog box and start using LEFMaker.

# 5 Contacting LiveNote

There are a number of ways to contact LiveNote. You can:

- Call us in the USA by dialing 1 800 LiveNote.
- Email us at [support@livenote.com](mailto:support@livenote.com).
- Visit our web site at [www.livenote.com](http://www.livenote.com). The web site contains the latest software and information about new products and services available from LiveNote.

The web site also contains a Knowledge Base. You can search the Knowledge Base for answers to questions. If you cannot find an answer there, you can submit a question to the LiveNote support team via the Feedback form.