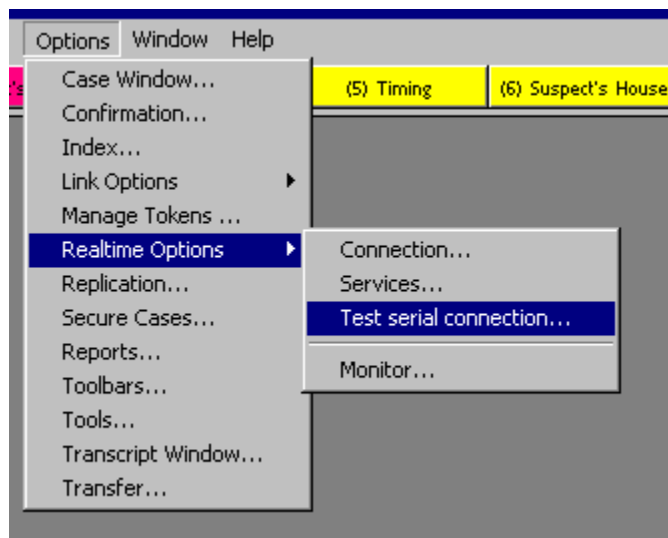


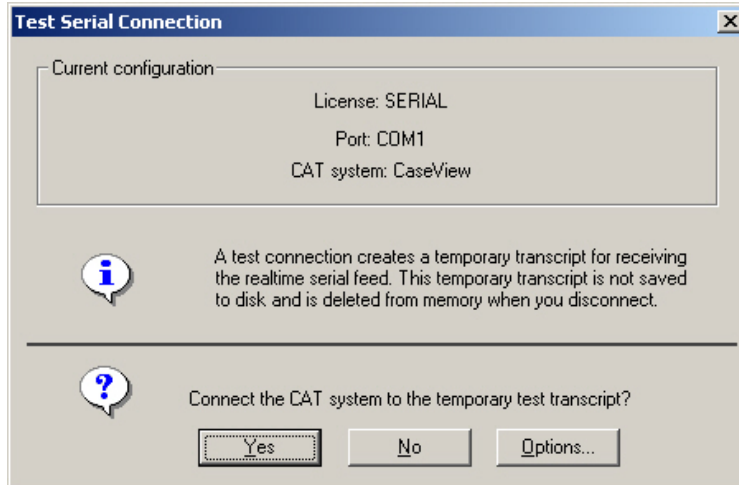


Connecting to Realtime with LiveNote 8.3

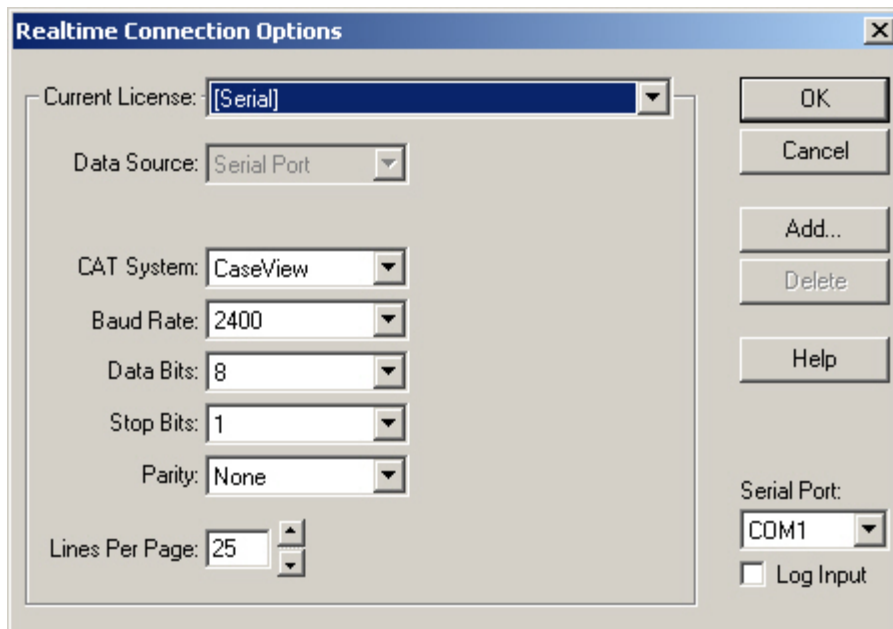
1. Before turning the computer on, connect the realtime cable to the available serial port on the computer. This is the small 9-pin male port also called a COM port.
2. Click on the Start button. Select Programs, choose LiveNote and double click on the icon.
3. Select your case and double or click on the case title once and press OK.
4. Click on the New Transcript button on the toolbar or go to the Transcript menu and select New. Name the day's transcript, i.e., Jones, John. Click OK. The transcript will open.
5. To test the serial connection before connecting, go to Option, select Realtime Options and choose Test serial connection.



6. The Test Serial Connection screen will appear.



7. Select Options if the current configuration is not correct. The current configuration is shown at the top of the dialog.
8. While in the Realtime Connection Option screen, make sure the Current License field is set to Serial. Change the CAT system to the realtime software feed being used by the court reporter. The baud rate rarely needs to be changed. If the baud rate needs to be changed, the reporter will instruct you. Select the appropriate number of lines per page and the available com port. Press OK.



9. Select OK from the Realtime Connection Options screen. The Test Serial Connection dialog will appear. Select Yes and the realtime connection can be tested without using a token. The Test Serial Connection feed is limited to 60 lines of text. This is a good practice before connecting to the transcript and activating a token.
10. When the feed has connected successfully, hit the Disconnect button on the toolbar. The temporary test transcript will automatically close and be deleted.
11. The transcript started earlier will be open on the screen. Press the Connect button on the toolbar and choose Yes. At this point, the token is activated and you are then connected to the court reporter's feed.

Note: We are suggesting you test your connection using the new Test serial connection option before connecting to the transcript and activating a token. This ensures that when a connection is made and a token is activated, all connection problems have previously been resolved.