

Installing Premise 4.4 for a Single User

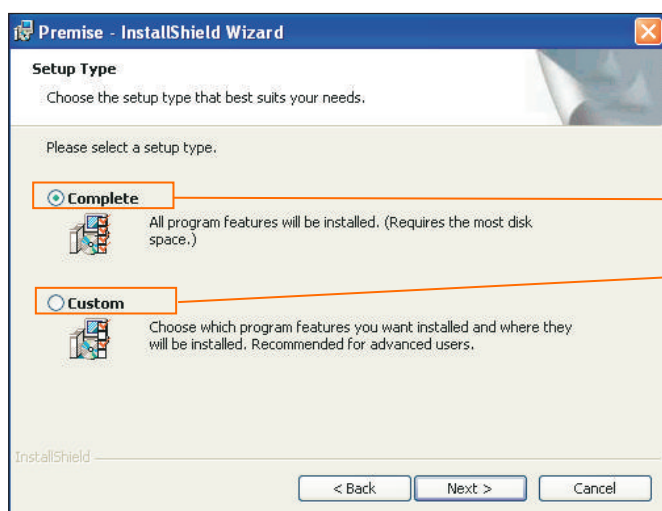
Follow these steps to install Premise 4.4 for a single user when data discs do not need to be shared on a network:

1. Insert the Premise 4 installation disc into your CD-ROM drive.
2. Choose **Run** from the Start menu.
3. Locate your CD-ROM drive and select **setup.exe**.

The Windows Installer will prepare to install Premise.

4. Click **Next** at the Welcome to the InstallShield Wizard for Premise dialog box.

A dialog box similar to the one shown in Figure 1 is displayed.



Select **Complete** to install Premise to the default location (C:\Program Files\West Group\Premise).

Select **Custom** to change where you want to install the software.

For general or technical questions, call West Customer Technical Support at 1-800-888-9907.

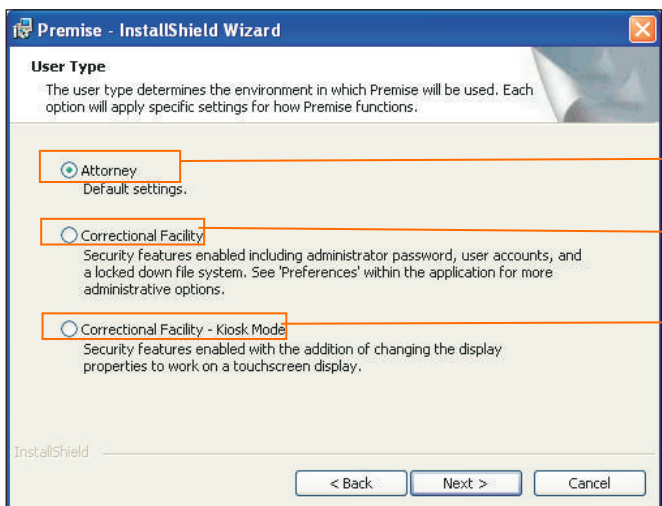
For assistance using Westlaw, call 1-800-WESTLAW (1-800-937-8529).

For free reference materials, visit west.thomson.com/westlaw/guides.

5. Select **Complete** to install Premise to the default location (C:\Program Files\West Group\Premise).

Note: Select **Custom** to change where you want to install Premise. See the *Custom Setup* section on the following page for more information.

A dialog box similar to the one in Figure 2 is displayed if you select *Complete*.



Select **Attorney** to install Premise using the default settings.

Select **Correctional Facility** to enable security features.

Select **Correctional Facility—Kiosk Mode** to enable security features and to have the display properties work on a touch screen monitor.

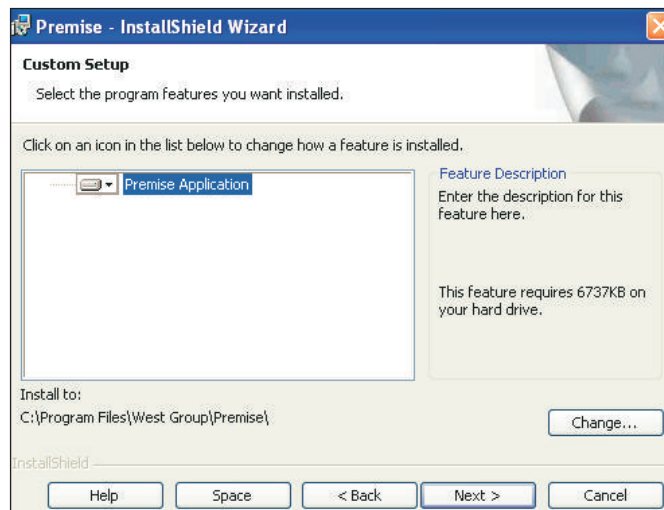
Figure 2. User Type dialog box

- Select **Attorney** to install Premise using the default settings and then click **Next**.
 - Select **Correctional Facility** to enable security features. Click **Next** and enter an administrator password to restrict access to Premise functions in the *Password* text box. Type the administrator password again in the *Confirm Password* text box and click **Next**.
 - Select **Correctional Facility—Kiosk Mode** to enable security features and to have display properties work on a touch screen monitor. Click **Next** and clear display options. Click **Next** and enter an administrator password to restrict access to Premise functions in the *Password* text box. Type the administrator password again in the *Confirm Password* text box and click **Next**.
6. Click **Install**. Program files are copied to your hard drive.
 7. Click **Finish** when the installation is complete.

Custom Setup

The default Premise installation location is C:\Program Files\West Group\Premise. If you want to change the location where Premise is to be installed, select **Custom**, and then click **Next** as shown in Figure 1.

A dialog box similar to the one in Figure 3 is displayed.



Click **Change** to change the installation location.

Figure 3. Custom Setup dialog box

1. Click **Change** if you want to change the installation location and then choose the location where you want to install Premise.
Note: If you do not want to change the installation location and want to install Premise in the default location (C:\ProgramFiles\West Group\Premise), click **Next** and follow the installation instructions.
2. Click **Finish** when the installation is complete.