

Installing Premise 4.2.0 on a Network

These instructions explain installing Premise for multiple users in a network environment and installing Premise from a network location as an end user in a network environment.

This is a two-part installation:

- Site administrator—setting up the installer
- End users—running the installer

Site Administrator—Setting up the Installer

The site administrator must have administrative privileges in order to run and set up the customized installer. Complete the following steps for installing and setting up Premise on a network:

1. Insert the Premise 4.2.0 CD-ROM disc into your CD-ROM drive.
2. Choose **Run** from the Windows Start menu.
3. Type **d:\setup /a** (where d is the letter of your CD-ROM drive), then click **OK** to start the network installer.
4. At the Welcome to the InstallShield Wizard for Premise dialog box, click **Next**.

A dialog box similar to the one shown below is displayed:

If *Administrator Password Disabled* is selected (default), users will have all Premise options available to them.

Select *Administrator Password Enabled* to restrict user access to Premise options. Enter an Administrator Password in the *Password* text box and re-enter the password in the *Confirm Password* text box. This password will control user options and must be entered when accessing options in Premise.

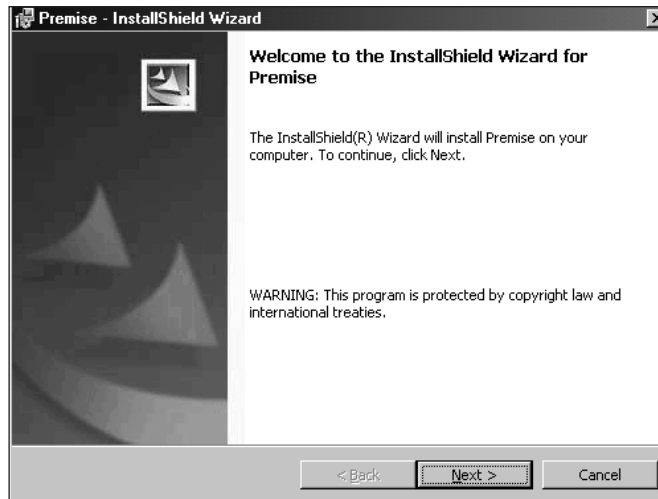
5. Click **Next**.

A dialog box similar to the one shown on the following page is displayed:

Westlaw is available on the Web at www.westlaw.com.

If you have general or technical questions, call West Customer Technical Support at 1-800-888-9907 or send an e-mail message to support@thomson.com.

If you have search questions about Westlaw, call the West Reference Attorneys at 1-800-622-3766 or send an e-mail message to referenceattorneys@thomson.com.



- If you select **New Install**, click **Next** and go to step 6.
- If you select **Upgrade an Existing Install**, you create a new end user installer with a copy of the existing configuration. The location should be accessible to all end users. Click **Next** and follow the on-screen instructions to upgrade to Premise 4.2.0.

IMPORTANT: The Delete Confirmation dialog box allows you to remove files from the old Premise 3.73 location. If you choose to delete files, end users will not be able to run Premise 3.73. The default setting is to not delete the Premise 3.73 files so end users can run Premise 3.73 from the old location until they run the installer for Premise 4.2.0.

6. Type the path to the location where the administrator installation files will be installed, or click **Change** to navigate to the location.
Then click **Next**.
7. Click **Install** at the Ready to Create Install Image dialog box.
8. Click **Finish** when the installation is complete.

Note: For information on a silent installation, see the PDF file of the *Premise Technical Reference Manual* on the Premise 4.2.0 CD-ROM.

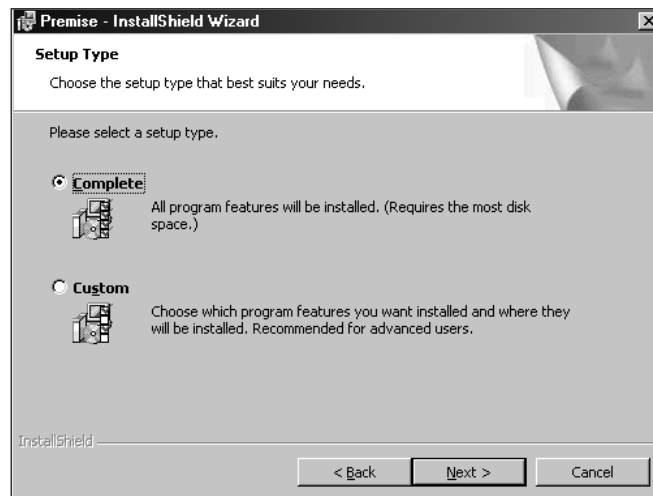
Setting up the installer for the network installation is finished. End users now must run setup.exe from the network location.

End Users—Running the Installer

1. Go to the network drive where the network installer is located as per the site administrator.
2. Run **setup.exe** from the network drive.
3. Click **Next** to begin the installation. If you are upgrading from Premise 3.73 or Premise 3.80, go to step 7.

A dialog box similar to the one on the next page is displayed:

Select **Complete** to install all program features. Click **Custom** to change where you want to install Premise, where program files are located, or if Premise runs from your local hard drive or the network location.

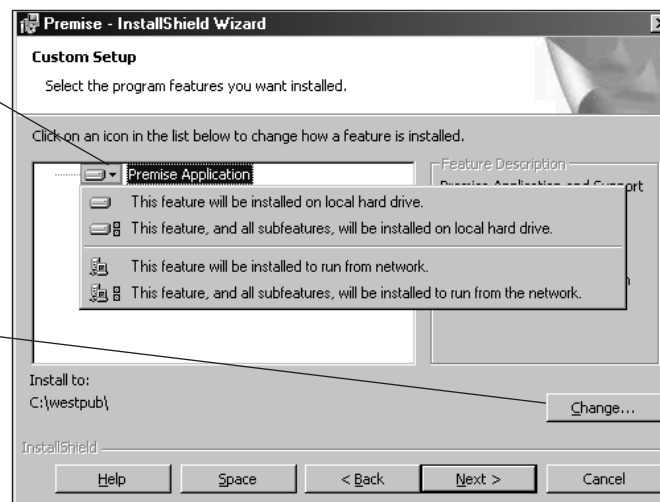


- Select **Complete** to install all program features. Click **Next** and go to step 7.
- Click **Custom** to change the location where Premise is to be installed, where program files are located, or if you want Premise to run from your local hard drive or the network location. The default location of Premise files is C:\Program Files\West Group\Premise. If you select **Custom**, click **Next**.

A dialog box similar to the one shown below is displayed:

Click the down arrow, then select **This feature, and all subfeatures, will be installed to run from the network** if you want to run Premise from the network location.

Click **Change** to select where you want Premise installed.



4. If you want to run Premise from the network location, click the **down arrow** next to *Premise Application* and select **This feature, and all subfeatures, will be installed to run from the network**.

Note: If you choose to run from the network, the **Change** button is disabled and you are not allowed to choose the network location.

5. If you want to change the location where Premise will be installed, click the **Change** button and select where you want Premise installed.
6. After you make your changes, click **Next**.
7. Click **Install** at the Ready to Install the Program dialog box.
8. Click **Finish** to complete the installation.

Printed 2/05. Material #40362345

© 2005 West, a Thomson business

The trademarks used herein are the trademarks of their respective owners. West trademarks are owned by West Publishing Corporation.



For assistance using Westlaw, call 1-800-WESTLAW (1-800-937-8529).
For free reference materials, visit west.thomson.com/westlaw/guides.