

Installing Premise 4.2.0 for a Single User

Follow these steps to install Premise 4.2.0 for a single user when data discs do not need to be shared on a network:

1. Insert the Premise 4.2.0 installation disc into your CD-ROM drive.
2. Choose **Run** from the Start menu, then click **Browse**.
3. Locate your CD-ROM drive and select **setup.exe**. Click **Open**, then click **OK** in the Run dialog box.

The Windows Installer will prepare to install Premise.

A dialog box similar to the one shown below is displayed:



4. Click **Next**.

A dialog box similar to the one shown below is displayed:

Select **Complete** to install Premise to the default location (C:\Program Files\West Group\Premise), or click **Custom** to change where you want to install the software.



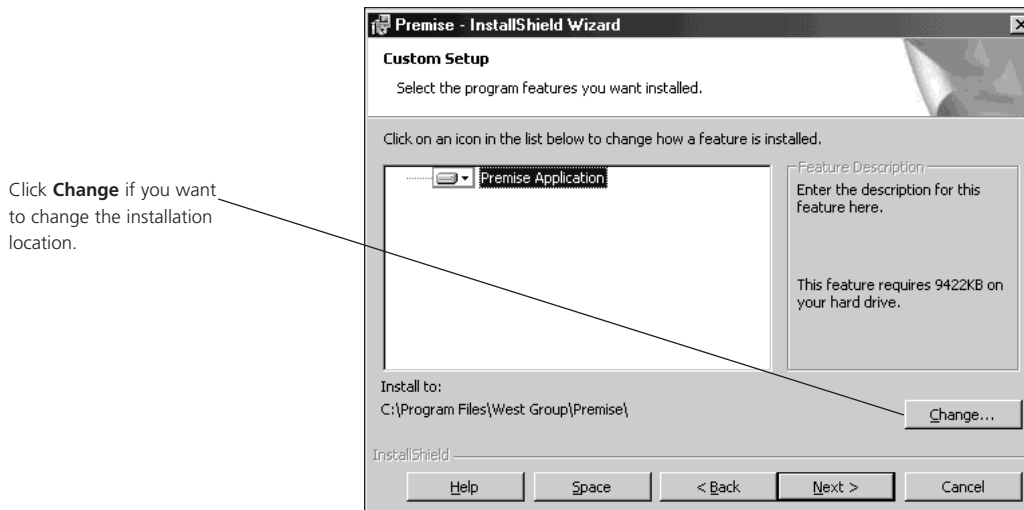
Westlaw is available on the Web at www.westlaw.com.

If you have general or technical questions, call West Customer Technical Support at 1-800-888-9907 or send an e-mail message to support@thomson.com.

If you have search questions about Westlaw, call the West Reference Attorneys at 1-800-622-3766 or send an e-mail message to referenceattorneys@thomson.com.

5. If you select *Complete*, click **Next** and go to step 8. Select **Custom** if you want to change the location where Premise is to be installed, then click **Next**.

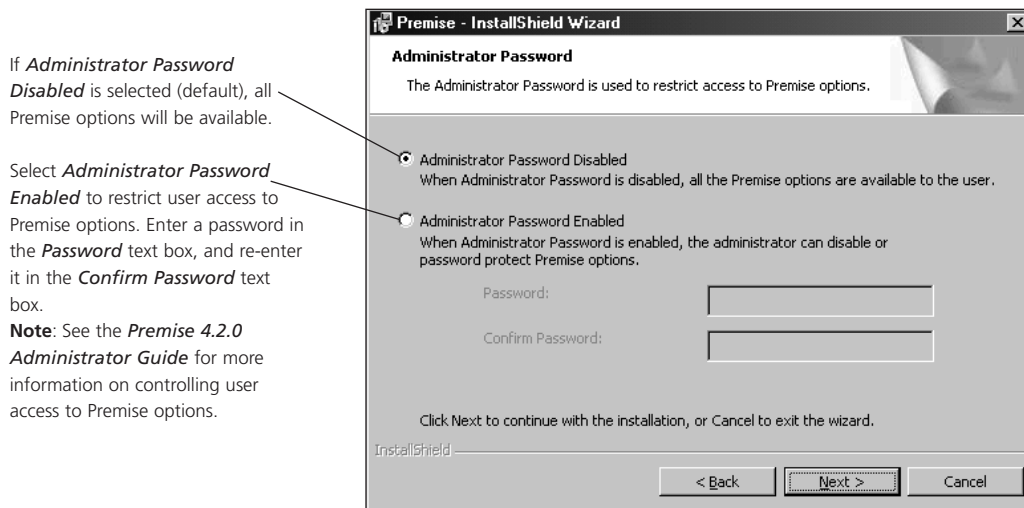
A dialog box similar to the one shown below is displayed if you selected **Custom**:



6. The default installation location is C:\Program Files\West Group\Premise. Click **Change** if you want to change the installation location, then choose a location where you want to install Premise.

Note: If you do not want to change the installation location and want to install Premise in the default location C:\Program Files\West Group\Premise, click **Next**.

A dialog box similar to the one shown below is displayed:



7. Click **Next**. Premise files are now copied to your hard drive.

8. Click **Finish** when the installation is complete.